

# "2 NEW LIQUIDATIONS NOW GOING ON"

**\*\*\* Sale Location #1 Gaffney, SC \*\*\***

**On-Site Liquidation Sale...May 17th to May 28th...By Appointment Only!!**  
**Warehousing, Distribution, and Cut/Sew Equipment! Large Manufacturing Company in Gaffney, SC Has Closed! See BACK PAGE for Additional Details!**

**YOU MUST CALL OR EMAIL NOW!!! IF YOU WAIT...YOU'LL MISS OUT!!!**

**ACT NOW!! ALL ASSETS MUST BE MOVED BY MAY 26TH!!**



**Gerber model DCS-3600 Single Ply Automatic Cutter**  
Conveyorized Cutting System, 72" wide x 15' long conveyor.  
2017 Model Year, With Feeder and Match Works Projector!

**Email for Further Details & Price**



**Fabric Cutting Tables**  
60", 66", & 78" Wide  
**\$95.00 to \$150.00**  
per 4' section



**Flat Table Top Rewinders**  
Digital Counters, Some with  
End Knives, 60" & 66" Width  
**\$2,950 to \$3,500**



**Scissor Lifts...3 each**  
3 each to choose from!  
JLG, MEC, & Up-Right

**\$3,500 to \$5,500**



**Order Pickers..12 each**  
Hyster & Crown Models  
Some work/Some need repairs

**\$995 to \$3,500**



**Hyster Forklifts...4 each**  
Electric Forklifts  
With Chargers, 36 Volt

**\$2,950 to \$8,950**



**Electric Pallet Jack...3 each**  
Toyota, Hyster, Crown  
3 each to choose from

**\$995 to \$1,500**

**See Additional Photos/Information at [t-liquidators.com/current-sales-flyer](http://t-liquidators.com/current-sales-flyer)**

**Visit our website for additional information on this sale. Additional assets include the following:**

- Warehouse Racking
- Floor fans
- Sewing Machines
- Lockers
- Cutting Knives
- Federal Feedrail
- Hydraulic Platform Lifts
- Cutting Room Supplies
- Wall Fans
- End Cutters
- Metal and Wood Work Tables
- And more

**For Sales Call John-Paul Deaver on location 910-608-1171**



# \*\*\* Sale Location #2 Lumberton, NC \*\*\*

All equipment below is located in Lumberton, NC. New Assets have just arrived and need to sell now!!



**Schwabe Model D**  
Swing Head, 20 Ton  
40" Wide x 20" Deep Base  
**\$3,995.00**



**Hudson Beam Press**  
Model S-325, 30 Ton  
60" x 22" Cutting Area  
**\$4,500.00**



**Sullair Air Compressor**  
Model 1100E, 230 volt 3 phase  
15 HP Screw Compressor  
**\$3,995.00**



**Sullair Air Compressor**  
Model LS12, 230 volt 3 phase  
50 HP Screw Compressor  
**\$4,995.00**

## Automatic Mop Sewing Machines



**Mop Sewing Machines**  
Texmatic Machinery Co  
Ontarian Sewing Automatic  
Programmable Mop Sewing  
Machines. 7 each Available. Most  
Complete. A few missing parts.  
**\$2,895.00 each**  
**Buy All \$14,995.00**

## 12 Head Embroidery Machine



**Embroidery Machine**  
Manufactured by the Wuhan  
North Phenix Jiamei  
Computerized Embroidery  
Machine CO in China.  
12 Sewing Heads, 9 Colors  
Model Number GG766-912.  
Set up with USB Drive Feed.  
**\$4,995.00**



**Judelshon Fabric Slitter**  
66" Overall Length, 1" Shaft  
15" Blade, Traveling Head  
**\$6,500.00**



**James Cash Fabric Slitter**  
90" Overall Length, 1-1/2" Shaft  
18" Blade, Traveling Head  
**\$7,900.00**



**Utica Fabric Rewinder**  
**72" Wide \$2,900.00**  
**96" Wide \$4,500.00**



**Astechnologies Model 7960T**  
Rotary Heat Transfer Machine  
64" Workable Width  
**\$9,995.00**

## Eastman Pull/Cut Spreading Machine



**Eastman Blue Jay Pull/Cut  
Spreading System**  
66" and 120" Widths  
Both units include the spreading  
unit, end cutter, and power cradle.  
**66" Machine... Michigan  
\$34,000.00**  
**120" Machine... New York  
\$44,000.00**

## Metal and Plastic Zippers



**YKK Zippers**  
Over 100,000 available. 90% YKK Metal and  
Plastic. 4" to 46" long. Many colors available.  
**\$.15 each for all / \$500.00 for lot of 2,000**

Email...[info@t-liquidators.com](mailto:info@t-liquidators.com)



# \*\*\* Sale Location #2 Lumberton, NC \*\*\*

All equipment below is located in Lumberton, NC. New Assets have just arrived and need to sell now!!

4 each



Sew Waistband

## Singer Model 302U

Cylinder, Multi Ndl, Chain Stitch  
Bases & Oil Pans included!  
Sold as Head Only

**\$595.00 each**

11 each



Sew Waistband

## Singer Model 302W

Cylinder, Multi Ndl, Chain Stitch  
Bases & Oil Pans included!  
Sold as Head Only

**\$295.00 each**

4 each



## Singer Model 457A

Single Needle, Zig Zag  
Sold as Head Only  
Includes Oil Pan

**\$595.00 each**

8 each

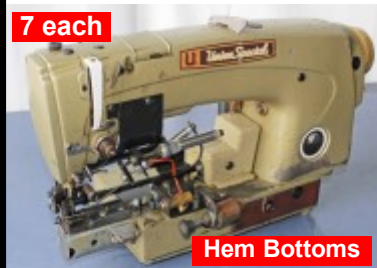


## Singer Model 457U

Single Needle, Zig Zag  
Sold as Head Only  
Includes Oil Pan

**\$395.00 each**

7 each



Hem Bottoms

## Union Special Model 63900

Cylinder, SN, Lock Stitch  
Sold as Head Only

**\$325.00 each**

6 each



## Union Special Model 56400

2 Needle, Chain Stitch, 1/4" gauge  
Sold as Head Only

**\$325.00 each**

7 each



## Juki Model LH-1152

2 Needle, 1/4" Gauge, Needle Pos  
Pneumatic Back Tack and FL

**\$1,095.00 each**

6 each



## Juki Model LH-1152

2 Needle, 1/4" Gauge, Needle Pos,  
Back Tack, Thread Trim, & FL

**\$695.00 each**

## Industrial Sewing Machines

4 each



## Juki Model MOR-3916

5 Thread Front Top Feed  
Safety Stitch Serger

**\$1,695.00 each**

5 each



## Juki Model MOR-2516

5 Thread Front Top Feed  
Safety Stitch Serger

**\$1,250.00 each**

10 each



## Yamato AZF-8600-SD

5 Thread Front Top Feed  
Safety Stitch Serger...Like New!

**\$1,995.00 each**

6 each



## Yamato Model AZ-8003SD

3 Thread Serger. Pneumatic  
Thread Trimmer and Foot Lift

**\$1,150.00 each**

10 each



## Juki Model LH-3528A-7

Twin Ndl Ndl Feed, Auto Ndl Pos,  
Thread Trimmer, Back Tack & FL  
220 volt 1 phase or 110 volt

**\$2,495.00 each**

5 each



## Seiko Post Machine

Twin Needle Walking Foot,  
3/8" Gauge, Split Needle  
Excellent Condition, 110 volt

**\$2,695.00**

20 each



## Consew Model 7360R-7DD

SN Drop Feed, Set up w/ Auto  
Ndl Pos, Thread Trimmer, Back  
Tack, & FL...NEW!!! 110 volt

**\$1,095.00 each**

6 each



## Juki Model MO-2504N

3 Thread Serger with Racing Belt  
Feed System Model PO-F  
Sewing collar of Knit Shirt

**\$1,150.00**

**Call Today...910-608-4005**



# \*\*\* Sale Location #1 Gaffney, SC \*\*\*

All equipment below is located in Gaffney, SC. Assets can be previewed by appointment only.



**Signode Strapping Machines**  
Two each Model SP-710 Automatic In-Line Strapping Machines, with Powered and Gravity Conveyor.

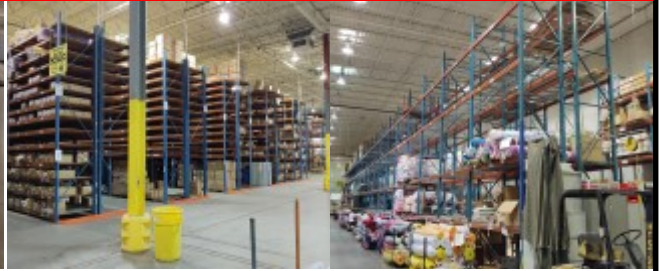
**\$2,450.00 each**

**Or buy all for \$5,995.00**



**Motorized Conveyor**  
Over 250' of Belt and Roller Conveyor...18" Wide Belt...20" Overall Width. Order Processing System...Includes Inclines!!!

**\$8,995.00 buys all loaded**



**Lots & Lots of Warehouse Racking**  
Tear Drop Racking is Available For Sale!! Also a large quantity of BOLT-TOGETHER Fabric Racking...20' tall x 54" Deep...Great Fabric Storage!! Disassembly & Load Out will need to be Discussed!

**Email or Call for Further Details**



**Lots and Lots of Rolling Carts...OVER 100 Each**  
Flat Carts, Fabric Carts, Work Carts, & MORE!!!

**Email or Call for Further Details**

**Rolling Fabric Carts w/Sides...Over 50 each**

**\$95.00 each**

**Lots and Lots of Office Furniture, Break Room**  
Equipment, Cubicles, Lockers, and much more!!!

**Email or Call for Further Details**

**Lateral File Cabinets...Over 70 each...2-4 Drawer**

**\$85.00 to \$150.00 each**

**See Additional Photos & Information at [t-tliquidators.com/current-sales-flyer](http://t-tliquidators.com/current-sales-flyer)**

**See Below Terms and Conditions for Both Liquidation Sales**

**Terms:** All assets advertised are located at the Gaffney, SC/Lumberton, NC location. All assets are sold "AS-IS" and "Where-IS", No refunds or exchanges. Payment terms are in advance of removing assets. Payment can be made via approved company check, wire transfer, certified check, or credit card, 3% processing fee applies. Purchases are subject to SC/NC sales tax, unless appropriate tax forms are provided. All equipment in Gaffney SC must be removed by May 28th 2021. LTL shipping is available, quotes can be provided. Loading and packing fees will apply to any purchase that requires shipping. Crating fees will apply if an item must be crated in wood. Inspection of equipment and pick up are by appointment only. Please call John-Paul Deaver at 910-608-1171 or Gerald Deaver in the office at 910-608-4005 to schedule a visit. Most machinery is 220 volt 3 phase. 110 volt sewing machine motors are available for sale at \$145.00 each, not installed. Most equipment can be tested before purchase. T&T Liquidators reserves the right to make adjustment to prices and terms.



# T&T Liquidators



**FOR SALES CALL JOHN-PAUL DEAVER or GERALD DEAVER**

**Toll Free Number...1-877-608-4006**

**Warehouse: 2403 NC HWY 211 West, Lumberton, NC 28360**

**Mailing Address: PO Box 3299, Lumberton, NC 28359**

**[WWW.T-TLIQUIDATORS.COM](http://WWW.T-TLIQUIDATORS.COM)**

email address:  
[info@t-tliquidators.com](mailto:info@t-tliquidators.com)

**May 2021**

**Fax: 910-608-3451**

**Telephone: 910-608-4005**

**SALE PRICE GOOD THRU May 28th, 2021**